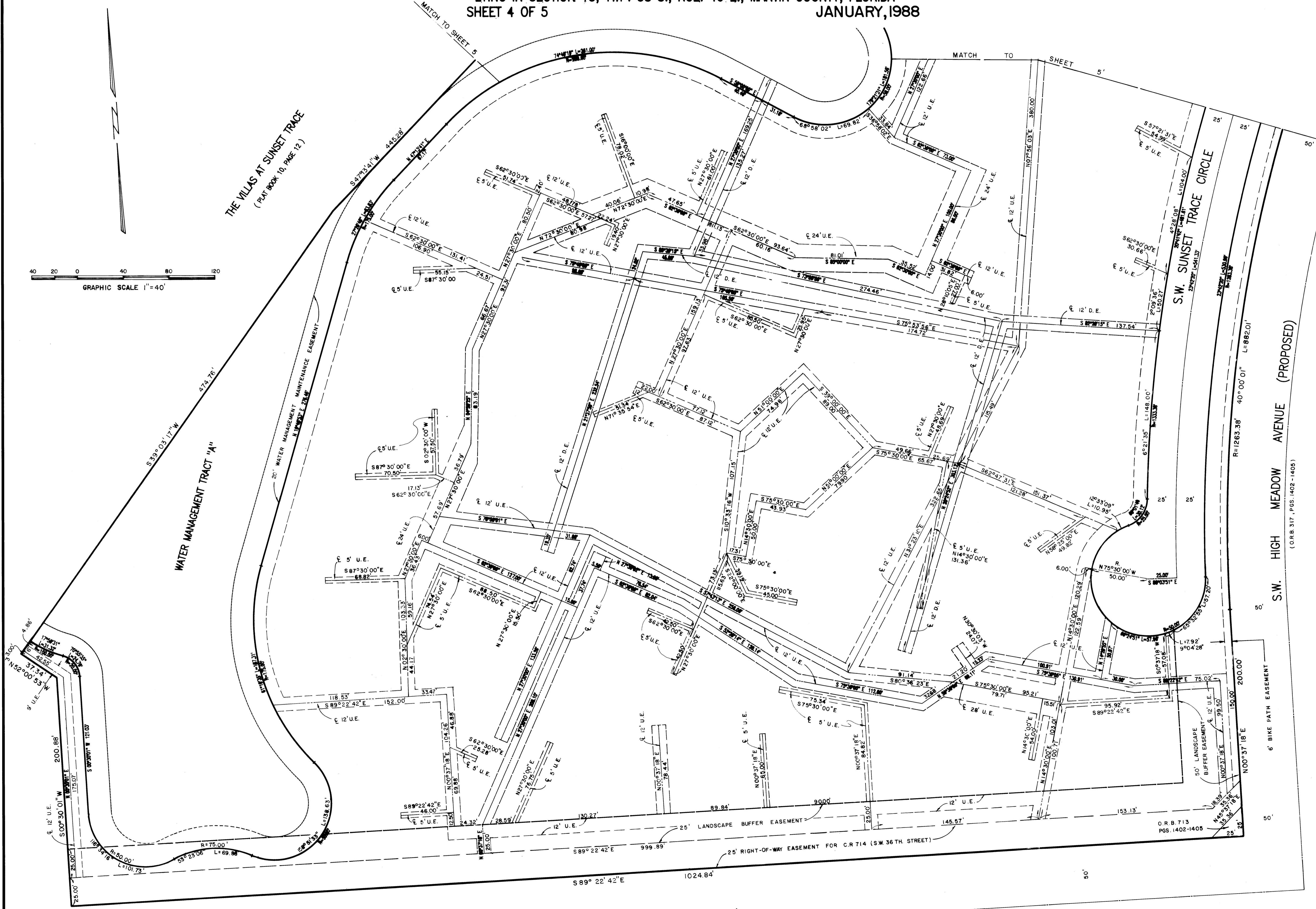
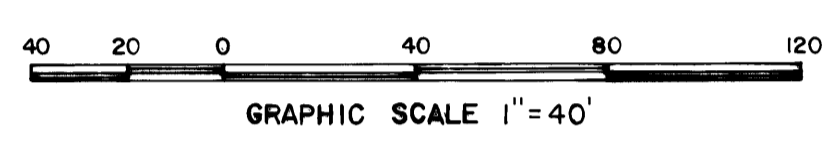


# A PLAT OF STAMFORD AT SUNSET TRACE

BEING PLAT NO. 36 OF MARTIN DOWNS, A P.U.D.  
LYING IN SECTION 13, TWP. 38 S., RGE. 40 E., MARTIN COUNTY, FLORIDA  
SHEET 4 OF 5  
JANUARY, 1988

I, MARSHA STILLER, CLERK OF THE CIRCUIT COURT OF MARTIN COUNTY, FLORIDA, HEREBY CERTIFY THAT THIS PLAT WAS FILED FOR RECORD IN PLAT BOOK 11, PAGE 11, MARTIN COUNTY, FLORIDA, PUBLIC RECORDS, THIS DAY OF \_\_\_\_\_, A.D. 19\_\_\_\_.  
MARSHA STILLER, CLERK OF CIRCUIT COURT MARTIN COUNTY, FLORIDA  
BY: \_\_\_\_\_ DEPUTY CLERK  
FILE NO. \_\_\_\_\_



C.R. 714 (S.W. 36TH STREET)

A PLAT OF  
STAMFORD AT SUNSET TRACE